

Autohaus Rieger GmbH

Mercedes-Benz CLA 200
AMG*PANO*NIGHT*Ambientebel.*Keyless-Go++
PKW

| | |
|--------------------------------|------------------------------|
| Price | 32,449 EUR |
| VAT | Claimable |
| Body shape | Sports car / Coupe |
| First registration | 12.2022 |
| Technical Inspection Authority | New |
| Mileage in km | 21,122 KM |
| Engine power | 120 KW (163 Hp) |
| Cubic capacity | 1,332 ccm |
| Fuel | Petrol |
| Colour | White |
| Gearbox type | Mechanical Gearshift, 6-Gear |
| Vehicle type | Used vehicles |
| Previous owners | From first hand |
| Vehicle-ID | 19756 |



Contact:

Autohaus Rieger GmbH
Nürnberger Straße 31
90518 Altdorf
Telephone: 09187-9519-0
Fax: 09187-9519-29
E-mail: f.rieger@auto-rieger.de
Homepage:www.auto-rieger.de

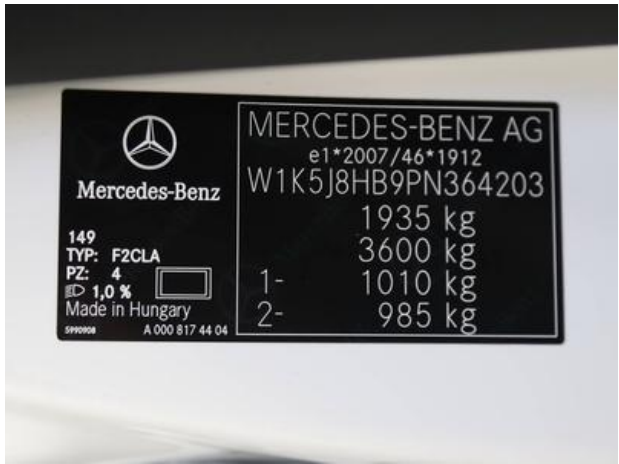
Features:

Dieses Fahrzeug erfüllt das Hersteller Qualitäts Siegel: Junge Sterne, Feul: Petrol, From first hand, New inspection, Sport Package, Voice control, Rear view camera, Festplatten-Navigation, Automatic air conditioning, LED headlights, Panoramic roof, Ledernachbildung ARTICO / Mikrofaser DINAMICA schwarz, Tempo-delimiter, Parking Assistant - Self-steering systems, Heated seats, 4-way electric windows, Window/head airbags, ESP (Electronic stability program), polarweiss, MBUX Multimediastystem, Apple CarPlay, Android Auto, Interior Color Black, AMG Leichtmetallräder, Alufelgen 18 Zoll, ABS, Comfort Key / KeylessStart, Electronic drive locking device (DLD), Traction control, Onboard computer, Emission category Euro 6d, Power steering, Outside temperature indicator, Tinted windows, Cup holder

Financing

| | |
|------------------------------|---|
| Example | |
| Down payment | 10,900,- |
| Net loan amount | 21,549,- |
| Debit interest | 6.78 % |
| Annual percentage rate | 6.99 % |
| Period in months | 36 |
| Total Mileage of financing | 30,000 KM |
| Interest | 1,439,- |
| Total amount | 25,844,- |
| Final Installment (37. Rate) | 18,500,- |
| 36 Monthly installments of | 204.00 |
| Financing Bank | Mercedes-Benz Bank AG - Siemensstraße 7 - 70469 Stuttgart |

The finance/leasing consumer has the right to cancel the finance/leasing contract according to § 495 BGB. Gemäß den Darlehensbedingungen ist für das Fahrzeug eine Vollkaskoversicherung abzuschließen.



| | |
|-------------------|---------|
| | |
| Mercedes-Benz | |
| 149 | |
| TYP: F2CLA | |
| PZ: 4 | |
| ED 1,0 % | |
| Made in Hungary | |
| A 000 817 44 04 | |
| MERCEDES-BENZ AG | |
| e1*2007/46*1912 | |
| W1K5J8HB9PN364203 | |
| | 1935 kg |
| | 3600 kg |
| 1- | 1010 kg |
| 2- | 985 kg |








Junge Sterne glänzen länger.
Ihre Vorteile auf einen Blick:

| | | |
|--|--|---|
|  24 Monate Fahrzeuggarantie* |  Mercedes me ready |  100 Tage länger als 3 Monate |
|  Garantie-Kilometeraufleistung |  Probefahrt innerhalb von 24 Stunden |  Finanzierung- und Leasingangebote |
|  10 Tage Umtauschrecht |  22 Monate Mobilitätsgarantie* | |
|  Wartungsfreiheit für 6 Monate (bis 7.500 km) |  Preisübernahme | |

*Die Garantieleistungen finden Sie unter www.mercedes-berlin.de/junge-sterne

RIEGER **Junge Sterne**